

Health and Safety



News and Updates

Handbook

Induction

Workstations

Risk Assessment

Contacts

Security

On-campus emergencies:

If you are on campus, or in a University-owned building, call University Security. They will make sure emergency services can get to you as quickly as possible. Phone:

- 666 on a landline
- 01225 383999 from a mobile

Security will talk to the emergency services and give them directions to your location.

Other emergencies:

If you are not on campus or in a University-owned building, and you need help because you or somebody else is at risk, call the emergency services.

- 999 is a free phone number to call the police, an ambulance or the fire service.

For calls that are not an emergency, use 01225 385349.

First Aid Kit locations



8 West level 1 (small corridor leading to kitchen and resources room)

8 West level 3 (kitchen)

Wessex House level 8 (kitchen)

Wessex House level 9 (kitchen)

East Building level 2 (reception)

Edge (box office and 2nd floor offices)

Other resources

[Counselling services for staff](#) (Employee Assistance Programme, EAP)

[Maintaining good mental health](#) (UHSE)

[Menopause advice](#) (external web site)

[Mind](#) (mental health charity)

[Mental Health at Work](#) (a resource website curated by [Mind](#) and funded by [The Royal Foundation](#) as part of their [Heads Together](#) campaign)

[Talking Toolkit - HSE Preventing Work-Related Stress](#)

[Staff Development Toolkit](#) (includes training in wellbeing, self-awareness, resilience, etc.)

[World Mental Health Day - Top Tips](#)

[IAPT Services](#) (for talking therapies in BaNES, Bristol, N. Somerset, S. Glos., Swindon & Wiltshire)

[Mental Health First Aid](#) courses

Accidents, Incidents & Emergencies - Reporting

It is important that all incidents are reported regardless of whether an injury has been caused or not.

This data helps inform what type of additional controls are required to prevent a re-occurrence.

There is also a legal obligation to report specific incidents to the [Health & Safety Executive](#).

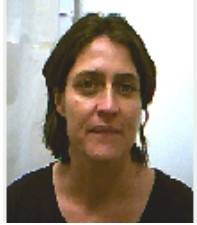
Incidents can be [reported electronically](#) using Chrome, Firefox or Edge browser.

For those that do not have access to a computer, the [paper form](#) can be used.

Incidents for this purpose include:

- Road traffic accidents (on campus or when using University vehicles)
- Work-related accidents (mishaps)
- Slips, trips, and falls
- Fire (including all alarm activations)
- Acts of violence (assault)
- Near misses

First Aiders



Gemma Ker-Bridges - 8 West 1.11 (MSc office)

glb26@bath.ac.uk

Extn 3165



Catherine Harrison-Smith - 8 West 1.26 (Assessments office)

cahs20@bath.ac.uk

Extn 5882



Alice Perryman - East Building 2.01 (Reception)

ap2555@bath.ac.uk

Extn 5537